



(EN) JP DECOR 3D flex panel user and installation guide

Welcome, and thank you for your trust!

EN

Thank you for purchasing the JP Decor 3D Flexpanel – a premium-quality, versatile wall covering solution that combines elegant design with flexible application. With proper care, our flexpanels can enhance and shape your interior spaces for many years to come.

To ensure that the panels retain their aesthetic value and functionality over the long term, please read the installation and maintenance instructions in this manual carefully.

Proper handling and maintenance are essential for the durability, appearance, and safe use of JP Decor panels.

Important Information:

- ▶ Please read the installation and maintenance guide carefully before starting the installation.
- ▶ Use only the recommended tools and adhesives.
- ▶ Install the panels on a clean, dry, and stable surface.
- ▶ Avoid direct contact with open flames, water, corrosive liquids, or extreme humidity.
- ▶ This product is designed for indoor use only.
- ▶ Damage resulting from improper installation, use, or lack of maintenance is not covered by the warranty.
- ▶ The manufacturer assumes no responsibility for any damages or accidents resulting from the disregard of the instructions and requirements outlined in the installation guide.

Let's shape the design of the future together!

Structural Information

EN



Material: MDF solid wood core with embossed, ribbed and colored protective surface layer



Panel dimensions: 2800 x 1200 x 9 mm



Weight: 18 kg / panel

Key Features of JP DECOR Flexpanel

EN

- **MOISTURE & STAIN RESISTANT:** The surface layer of the panel is moisture-resistant – it can withstand light exposure to room-temperature water mist or vapor
- **DURABLE STRUCTURE:** Flexible yet strong construction under normal conditions
- **FLEXIBLE:** Can be bent and joined as desired
- **EASY TO INSTALL:** Thanks to the large panel size, installation is quick and straightforward
- **VERSATILE:** Suitable for wall coverings as well as curved surfaces (e.g., furniture, columns)
- **ECO-FRIENDLY:** Made from natural solid wood base material
- **STYLISH:** Available in a variety of colors

Preparation:

- The installation surface must be completely dry and free from any moisture. Do not apply panels to freshly plastered, painted, or deeply primed surfaces. A dry, temperature-stable, and even surface is essential. Avoid porous or glossy surfaces. Panels must be acclimatized for at least 24 hours at the location prior to installation. Installation should always be carried out by two people.

Applications:

- **1. Wall Cladding:** JP Decor's flexible panels offer an aesthetic and easily applicable solution for both flat surfaces and more complex, curved wall structures.
- **2. Ceiling Cladding:** JP Decor panels provide a modern and stylish way to highlight the ceiling — transforming it into a functional yet eye-catching and character-rich surface.
- **3. Furniture Manufacturing:** JP Decor panels bring new inspiration to furniture design, offering a premium finish that enhances the appearance and value of the final product.
- **4. Column Cladding:** JP Decor 3D Flexpanels are a perfect choice for cladding both round and square columns. Their flexibility and large size allow for quick and precise installation, even on more challenging curved surfaces.
- **5. Use of Accessories:** For a flawless result, use connection, edge or corner profiles that ensure smooth transitions, protection, and an elegant finish. Profile length: 3 meters.

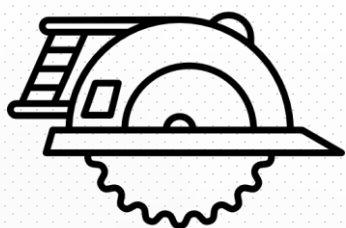
Tools Required for Installation

EN

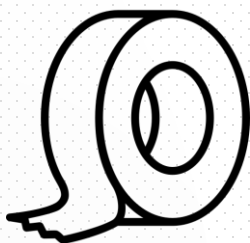
Necessary Tools:

1. Handheld circular saw with guide rail
2. Masking tape
3. Measuring tape
4. Spirit level and/or laser level
5. Adhesive
6. Ladder
7. Nail gun
8. Two-person team

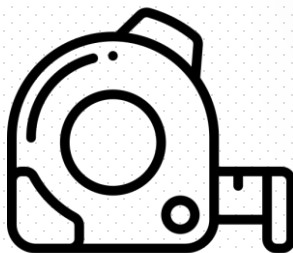
1.



2.



3.



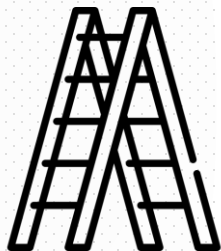
4.



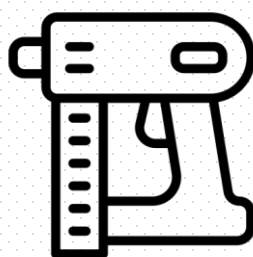
5.



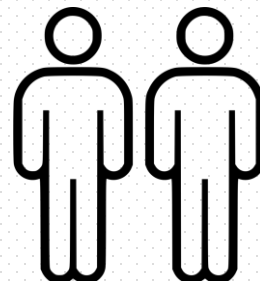
6.



7.



8.



Installation and panel handling must always be carried out by two people!

1.a. Installation on Flat Vertical Walls

EN

Recommended adhesive: Soudal T-REX Power Adhesive

- **Surface Preparation:** Ensure that the wall to be covered is clean, smooth, dust- and grease-free, and completely dry. If needed, level out surface irregularities, remove protrusions, and fill any cracks. Important: For proper adhesion, the wall must be solid and load-bearing – no crumbling plaster or flaking paint should remain. Before applying adhesive, inspect the wall again: only a properly prepared surface ensures lasting bonding.
- **Cutting:** Cut the panel to the required length and check the fit. It can be cut using a handheld circular saw with a guide rail. For perfect, professional-grade cuts and seamless joints, use a panel saw in a woodworking shop. Applying masking tape at the cutting line can significantly improve the quality of the cut. For cutouts, drill holes in the corners first and then cut between them.
- **Applying Adhesive:** Apply the adhesive to the back of the panel in small blobs or thin strips. The adhesive should be distributed evenly — full coverage is not necessary. Always apply the glue only to the back of the panel, not the wall.
- **Attaching Panel to the Wall:** Position the panel on the wall according to the pre-planned layout. Use a spirit level to ensure correct vertical and horizontal alignment. Press firmly against the wall to ensure good adhesive contact. If needed, make final adjustments within 1–2 minutes, before the adhesive begins to set. Make sure adjacent panels fit tightly without gaps, and that the ribbed pattern aligns continuously for a seamless look. Leave 1 mm expansion gaps between panels, and 3 mm gaps at the ceiling and floor.
- **Fixing & Curing:** In most cases, a strong initial tack adhesive like Soudal T-REX will hold the panel in place without additional support. Still, always verify that the panel remains securely attached. At normal room temperature, the adhesive cures fully within 24–48 hours — do not stress or load the panel during this period.
- **Finishing Touches:** Remove any excess adhesive (fresh glue with a damp cloth; cured glue mechanically and gently). For a clean, protected finish, use edge or joint profiles as needed — see more in section 5. Accessories. The result is a durable, decorative wall cladding with a scratch-resistant, long-lasting finish that requires no additional painting or treatment.

1.b. Installation on Curved Walls

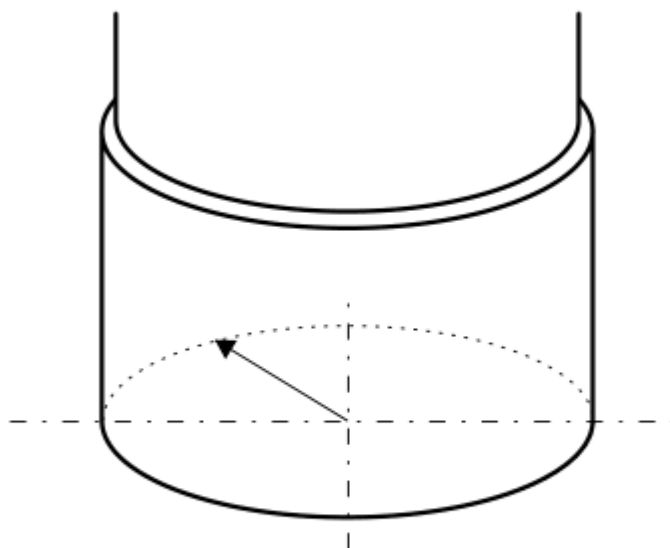
EN

Recommended adhesive: Soudal Fix All High Tack

- **Surface preparation, cutting, and gluing: Follow the instructions outlined in section 1.a. Installation on Flat Vertical Walls.**

Additional considerations:

For curved or radius installations, you will need temporary bracing/straps or intermediate fixing using a nail gun to hold the panel in place until the adhesive cures. Always bend the panel along the direction of the ribbing (longitudinally). Do not bend the panel below the minimum bending radius (R-min) — this can result in cracks or surface damage. Improper installation (such as excessive bending, poor adhesion, or insufficient support) may lead to panel breakage, detachment, or deformation. The manufacturer does not assume responsibility for damage caused by ignoring the installation guidelines.



R min: 190 mm

2. Ceiling Installation

EN

Recommended adhesive: Soudal Fix ALL X-treme Power Express

- **Surface preparation, cutting, and gluing:** Follow the instructions outlined in section 1.a. Installation on Flat Vertical Walls.
- **Planning and marking:** Before beginning the installation, carefully plan the layout of the panels on the ceiling. Measure and mark the panel positions — using a laser level or right-angle template can greatly improve accuracy. Ensure that the ceiling substrate is solid: for plastered surfaces, check that no crumbling occurs; for suspended ceilings, verify that the structure can safely support the panel's weight.
- **Fixing the panel to the ceiling:** Apply the adhesive generously to the back of the panel in zigzag lines or dots, paying special attention to the edges and corners. Do not skimp on adhesive — full surface coverage ensures proper load distribution. Align the panel with the markings and press it firmly into place. Immediately reinforce the panel with mechanical fixation, such as a nail gun or screws, to prevent it from slipping or falling during curing. You may also use decorative edge and joint profiles to achieve clean transitions — these are covered in detail in Section 5: Accessories. Allow the adhesive to fully cure before applying any load — this typically requires 24–48 hours under normal indoor conditions.

3. Installation on Furniture Fronts

EN

Recommended adhesive: Soudal Fix All High Tack

- **Choosing the right base panel:** The structural board serving as the furniture front must be rigid and stable. Avoid adhering the panel directly to weak substrates (e.g., thin plywood), as the panel's natural tension may warp or distort it over time. The best choice is MDF or high-quality multi-layer furniture boards, which are flat and resistant to warping. Use at least 18 mm thick MDF or a solid multi-layer furniture panel capable of supporting the panel's weight without deforming.
- **Preparing and gluing the panel:** Measure and cut the JP Decor panel to precisely fit the surface of the furniture front. If cutouts are required (e.g., handles, hinges), mark and drill guide holes at the corners, then cut between the holes for clean edges. Apply mounting adhesive directly to the furniture panel surface — you may use a grid pattern of thin lines or denser dots to ensure even bonding across the entire surface. Place the panel onto the board and align it carefully. Use clamps (parallel clamps) or weights to press the panel down evenly while the adhesive cures — especially along the edges. Always insert a protective spacer (e.g., felt or cardboard) between the clamp and the panel to avoid damaging the decorative surface. Allow the adhesive to fully cure according to the manufacturer's instructions (typically 24 hours).
- **Finishing and aesthetics:** Once the panel is securely bonded, the edges must be sealed or finished for durability and appearance. Use edge trims to cover exposed edges or L-profiles where the panel doesn't completely cover the side of the board. These additions protect the edges from impact and contribute to a refined, high-quality look.

4. Installation on Columns

EN

Recommended adhesive: Soudal Fix All High Tack

- **Preparation and cutting to size:** Measure the circumference and height of the column. JP Decor panels are large and flexible enough to wrap around an entire column, but in some cases, you may need to join multiple panels. Cut the panel so that it covers as much of the visible surface as possible in one piece. For cylindrical columns, it's ideal if the panel's length matches the column's circumference, allowing for a clean vertical seam at the back.
- **Adhering the panel to the column:** Apply adhesive both to the surface of the column and the vertical edges of the panels. For round columns, apply adhesive in vertical stripes, spaced approximately 10–15 cm apart. Additionally, apply adhesive to the vertical edges of the panel to ensure a secure bond where the ends meet at the back. Make sure there is adequate adhesive coverage to ensure full contact. JP Decor's flexible panels conform well to curved surfaces, but proper application of the adhesive is critical. Always bend the panel parallel to the ribbing direction. Do not bend the panel below the minimum bending radius (R-min) of 190 mm, as this may cause cracks or damage.
- **Finishing and aesthetics:** Once installed, the panel edges should be properly sealed or finished for durability and a polished look. Use edge profiles to cover open ends or L-profiles where the panel meets the base material and doesn't fully cover it. This protects the panel from chipping and enhances the overall appearance with a clean, professional finish.

5.a. Installation with Accessories

EN

The profiles are made of aluminum, which is lightweight, durable, and resistant to corrosion. They can be fixed using adhesive and/or screws. All profiles are supplied in a standard length of 3 meters and are available in black or gold finishes.



**JP DECOR „T” CONNECTOR
PROFILE**



**JP DECOR „FLAT” CONNECTOR
PROFILE**

Designed for joining wall panels. The T-shaped cross-section fits snugly between two panel edges, and the top wing covers the gap for a clean finish. Width: 10 mm.

A straight profile used to join panels together. Its flat shape provides a seamless, elegant appearance. Width: 17 mm.



**JP DECOR „U” END CAP
PROFILE**



**JP DECOR „L” END CAP
PROFILE**

Used to cover the exposed edges of panels on open sides or transitions between surfaces. Also ideal for protecting the edges of cabinet fronts. Width: 11 mm.

Applied to external corners for both protection and decoration. Prevents chipping and provides a visually appealing transition between the panel and its surrounding edges. Width: 39 mm.

5.b. Installation with Accessories

EN

Special Connector Profile – With Integrated LED Lighting



This exclusive connector silver profile features a built-in LED strip and a frosted (opal) diffuser, providing subtle, indirect illumination between wall panels. Width: 12 mm, Length: 3 meters.

Cleaning and Care Instructions

1. The panels require no special maintenance.
2. In case of dirt, use a scratch-free cloth and neutral detergent to clean the panel surface.
3. Regularly inspect the condition of the panels. Replace damaged parts immediately.
4. The panels are intended for indoor use only.
5. Not suitable for areas with direct water exposure (e.g. bathrooms).
6. Avoid scratches and strong impacts!
7. Keep the panels away from direct flame, UV light, water jets (soaking), steam, high humidity, or corrosive substances. The installation area should be well-ventilated. Store and maintain panels under optimal conditions; Temperature: between 18–28 °C, Humidity: between 40–45%.



Following these guidelines will help ensure the long-term aesthetic quality of your JP Decor wall panels.

Transport and Storage Guidelines

EN

Important! Please follow the instructions below with extra care.

1. All handling, transportation, and installation of the panels must be performed by two people at all times. A paneleket tilos tekercselve szállítani és tárolni!
2. Do not roll the panels for transportation or storage under any circumstances!
3. During handling, bending is only permitted in a "U" shape – and only if the solid wood layer is facing upward. Bending is strictly allowed only in this orientation.
4. When stacking in a "U" shape, always place protective material between the layers (e.g., film or cardboard) to prevent surface damage.
5. During transport and storage, lay the panels flat whenever possible. When stacking flat, make sure that panels do not damage one another. The first panel's solid wood layer must face downward, while the colored surface should face upward. Always stack like-to-like surfaces, i.e., colored side onto colored side.



Following these steps ensures that the aesthetic and functional quality of the JP Decor wall panels is preserved during transportation, handling, and storage.

Contact

EN

You can always count on the JP Decor team!



E-mail:
Phone:
Website:

info@jpdecor.eu
[+36 70 618 3589](tel:+36706183589)
www.jpdecor.eu